



# A Key Player in Ohio's Economy

ArcelorMittal

Cleveland | Columbus | Marion | Richfield | Shelby | Warren: 2019 data

Ohio is home to one of the most productive integrated steel mills in the world, ArcelorMittal Cleveland. Making steel for more than 100 years, the facility is recognized today as a global leader in producing advanced steels for the auto industry. Over half of its annual production stays in Ohio, driving the economy and supporting thousands of jobs.

In addition to Cleveland, ArcelorMittal operates four facilities – a coke plant in Warren, tubular operations in Marion and Shelby, and a finishing operation in Columbus – as well as a regional office in Richfield. In 2019, ArcelorMittal employed nearly 3,000 hardworking men and women throughout the state. ArcelorMittal contributes nearly \$295 million in payroll as well as property and sales taxes. Annually, we make significant investments in nonprofit organizations in the areas of STEM education, the environment, and health and safety. The communities where we operate are far more than just the physical locations of our facilities. These communities are made up of our neighbors and key stakeholders. They are also the places where our employees choose to live and raise their families, and where our future workforce is educated and trained. It is important to us to be both an active and a welcomed member of our communities.

As the world's largest steel and mining company, ArcelorMittal employs 191,000 employees across 60 countries. We are the recognized leader in all major steel markets including automotive, construction, machinery, household appliances and packaging. We employ more than 1,300 scientists at 12 major global laboratories, working to maintain ArcelorMittal's leadership position in steel innovation and sustainability.

## Economic impact in Ohio

*All figures are based on 2019 data*

Direct employment	2,921
Annual payroll	\$295 million
Property taxes per year	\$2.6 million
Sales taxes per year	\$2.64 million

## ArcelorMittal in the United States

25 steel producing and processing facilities

Presence in 15 states and the District of Columbia

14.2 million tons of raw steel produced by ArcelorMittal USA

More than 18,000 employees

3.34 percent energy reduction by ArcelorMittal USA from 2013 baseline

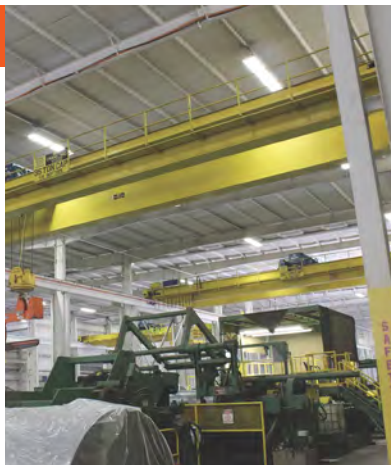
ENERGY STAR® partner





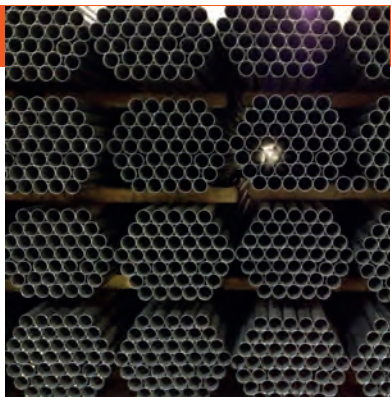
## Cleveland

<b>Plant leadership</b>	Mike Madar, vice president and general manager
<b>Union representation</b>	Dan Boone, president, United Steelworkers Local 979
<b>Employees</b>	1,863
<b>Acreage</b>	870
<b>Location</b>	Strategically located on the Cuyahoga River
<b>Steelmaking capacity</b>	Approximately 3.8 million tons
<b>Products</b>	Hot-rolled, hot-dip galvanized sheet
<b>Markets served</b>	Automotive, construction, converters and distribution



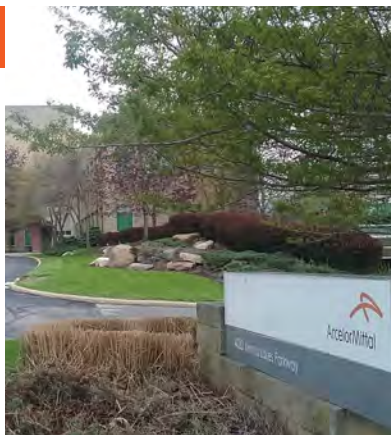
## Columbus

<b>Plant leadership</b>	Jerry Cook, operations manager
<b>Union representation</b>	Fred Silvia, president, United Steelworkers Local 9309
<b>Employees</b>	125
<b>Acreage</b>	88
<b>Location</b>	Approximately 20 minutes southeast of downtown Columbus
<b>Coating capacity</b>	Approximately 450,000 tons
<b>Products</b>	Hot-dip galvanized sheet
<b>Markets served</b>	Automotive and distribution markets



## Marion

<b>Plant leadership</b>	Chad Ousley, plant manager
<b>Union representation</b>	Bill Major, unit chairman, USW Local 1939
<b>Employees</b>	97
<b>Acreage</b>	36
<b>Location</b>	Approximately 40 miles southwest of Mansfield
<b>Production Capacity</b>	65,000 Metric Tons or approx. 72,000 Short tons
<b>Products</b>	Conveyor tube, speciality automotive tube, boiler tube
<b>Markets served</b>	Automotive, boiler, conveyor, distribution



## Richfield

A regional headquarters for more than 40 ArcelorMittal USA employees including executive offices of ArcelorMittal USA's environmental and health & safety leadership



## Shelby

<b>Plant leadership</b>	Tim Hawley, plant manager
<b>Union representation</b>	Norm Shoemaker, president, United Steelworkers Local 3057
<b>Employees</b>	663
<b>Acreage</b>	107
<b>Steelmaking capacity</b>	Approximately 240,000 tons
<b>Products</b>	Seamless and welded precision tubes, drawn-over-mandrel (DOM) and cold-drawn tubes
<b>Markets served</b>	Automotive, construction, distribution, farm machinery, oil and gas tooling



## Warren

<b>Plant leadership</b>	Joe Magni, operations manager
<b>Union representation</b>	Rich Sayers, president, United Steelworkers Local 1375-07
<b>Employees</b>	173
<b>Acreage</b>	170
<b>Location</b>	Approximately 60 miles southeast of Cleveland
<b>Production capacity</b>	Approximately 550,000 tons
<b>Products</b>	Coke
<b>Markets served</b>	Iron production process at ArcelorMittal Cleveland's blast furnaces